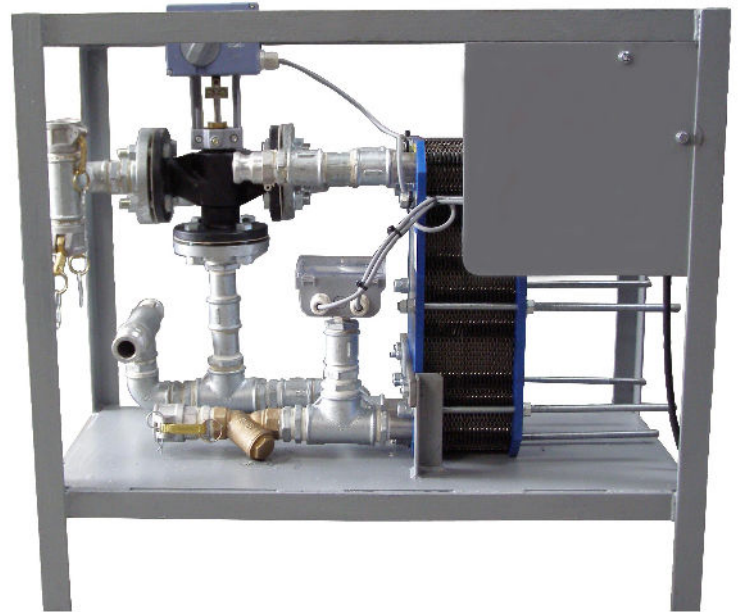


Cross Rental Services' domestic hot water plate pack is a high-efficiency product, which provides substantial heating capacity.

It is designed to deliver a temporary supply of domestic hot water when you connect it to one of our packaged boiler plants or an existing site boiler.



Detail	300kW Heat Exchanger
Heating Capacity	300kW
DHW Inlet Temperature	35°C
DHW Outlet Temperature	60°C
Boiler Inlet Temperature	80°C
Boiler Outlet Temperature	59.5°C
Pressure Drop	0.5 bar
Mains Cold Water Inlet Connection	2" Storz
Hot Water Outlet Connection	2" Storz
DHW Return Connection	1" Storz
Primary Flow & Return Connections	3" Storz
Plate Material	316 Stainless
DHW Fittings	Brass
Power Supply	230V 1ph 16A
Controls	Siemens 3-Way Actuating Valve
Dimensions	1,055 x 590 x 1,025mm